

## Journals

**Current issues** are displayed on the revolving journal stands and most back issues are shelved in A-Z title sequence within the Library.

All journals are for **reference only** .

## Unit boxes for Southampton students

These are located opposite the photocopier. These articles must not be taken out of the library but can be photocopied.

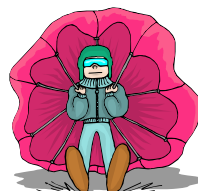
## Inter-Library Loans for Bournemouth students

Inter-Library loans with Bournemouth University can be arranged for Bournemouth students. Complete one of the brown cards on the shelves opposite the photocopier.

(10/07)

## Photocopying

Self service photocopying is available in the library. An EMOS copy card, giving 60 credits at a cost of £3, is available from a dispenser within the library.



### For more information:

Contact the library staff or just drop in.

**Healthcare Library  
The Ark Centre  
Basingstoke & North  
Hampshire NHS Foundation  
Trust**

### Opening Hours:

**Mon, Weds, Thurs**

8.30 am - 5.00 pm

**Tuesday** 8.30 am - 7.00pm

**Friday**

8.30 am - 4.30 pm

For **24 hour** access ask the library team. £10 deposit.

**Tel: 01256 31316/313182**

**Fax: 01256 461129**

**Email: library@bnhft.nhs.uk**

## The Healthcare Library

## Library and Internet Services for Pre-registration students



### Library Website

<http://healthcarelibrary.org.uk>

# What can the Healthcare Library offer you?



## Electronic Resources

<http://healthcarelibrary.org.uk>

Use the library website from any PC with internet access.

## Databases

Your university provides you with access to all the databases you need. These should be accessed from the university computer suite.

## Advice & Training

The library team will do everything they can to help you with your enquiries but please be aware that training for literature searching is provided by your university.

## Books

1. You may borrow up to 8 items.
2. A reservation service is available.
3. Books are issued for a period of twenty eight days, in the case of normal loans, or fourteen days for high demand items.
4. Books can be renewed by phone, fax, letter, in person, or by email.
5. Short loan items incur overdue fines of 50p per day.
6. Replacement costs + an administration charge of £10.00 is payable for any non returned items and late payment of fines.

**\*\*Outstanding fines and/or non returned items will affect your ability to borrow further stock from this or Southampton University libraries.\*\***

## Multi-Media

Multi-media packages (including over 150 videos) are available to borrow from the library.

